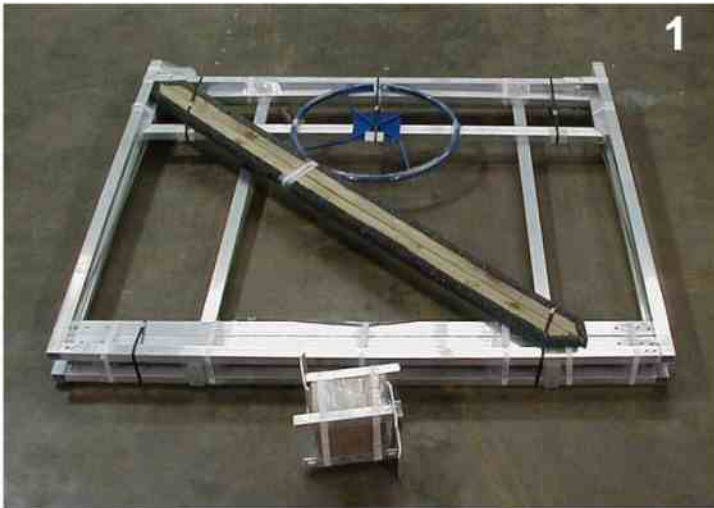
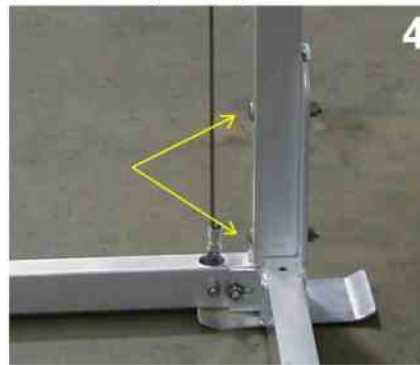


1000lb. Vertical Boat lift 60" Beam and 80" Beam assembly instructions



Note: each number refers to a picture number thru-out these instructions, Example: number 1. refers to picture 1.
1. Inspect the Boat Lift for any shipping damage. Find a level area to assemble the Boat Lift.
Position the Boat Lift Package on its side with the side panel (winch mounted) on the bottom.

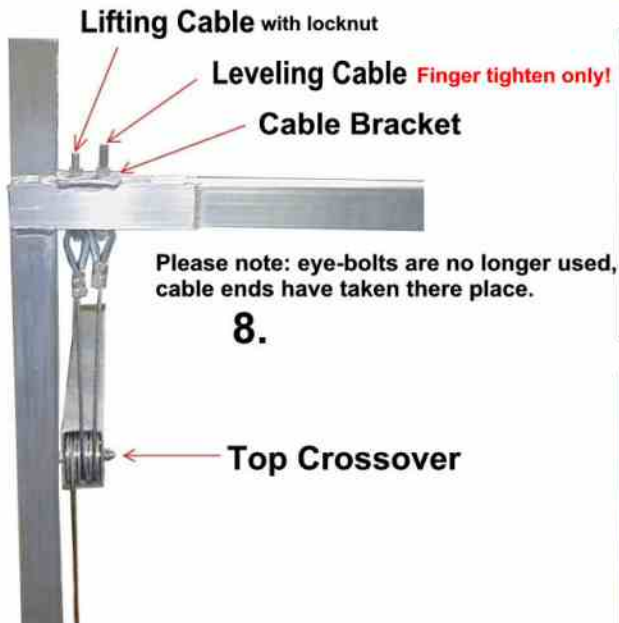


2. Stand up the side Pannel (without winch) and position the bottom crossovers and foot pads.
3. Bolt the crossover to the side pannel using 2- 3/8" x 3" carriage bolts.
4. Mount the foot pad, 3/8" washers and nuts, tighten the carriage bolts so the bolt is seated flush.
Repeat steps 3 and 4 on all four corners of the boat lift.
5. When leveling the Boat Lift it may be nessasary to use only one bolt in the foot pad (this is normal).



6. Position top crossovers as shown in picture 6.

1060VA and 1080VA



Mount the wheel according to the winch instructions in the yellow winch package. Check and make sure the cables are properly seated in the pulleys.

7&8. Attach the top crossover as follows: Slide the cable ends thru the Cable Bracket and spin on the nuts, Note: mount the lifting cable so there is at least 3/8" of the cable end passed thru the nut. Thread the nut flush with the cable end on the leveling cable. Mount the lower end of the leveling cables to the bottom of the side panel with 1- 3/8" x 2 1/2"CS. and nut (same as winch side panel) or (as seen picture 3 & 4).

9&10. Mount the guide mounting angle and top frame rail using 2 - 3/8" x 3"CS. nuts and washers. Note: use washers on both the bolt head and nut side (Finger tighten only) Repeat this step on all 4 corners. Flush the Guide mounting angle with the top of crossover and tighten the bolts. Repeat this step on all 4 corners.

11&12. mount the Top Frame Guide plates using 2 - 1/4" x 1"CB. nuts and washers, adjust for a 1/4" gap in the corner and tighten. Repeat this step for all 4 corners. Note: mount with the 1/4" nuts and washers on top.

Raise up on leveling cable ends to remove cable slack and finger tighten nut. Note: Donot tighten with wrench Under normal operation contitions leveling cables will show some slack, Binding may result from over tightening leveling cables.



13,14&15. Mount cradles as shown using 1/4" nuts, bolts and washers. The cradles will need to be adjusted to your watercrafts hull when the boat lift is installed.



Warning: Donot over tighten Bolts this may cause the nuts to lock up.